

# Solaris 64 RS

## Good Game

Year 2023







# Contents

---

pag. 3 About the boat

pag. 4 Standard specification of the boat

pag. 6 Customisations

pag. 9 Technical equipment

pag. 11 Deck fittings & rigging

pag. 18 Electronics and entertainment

pag. 23 Interiors



# About the boat

## BRIEF DESCRIPTION

---

A new model from the drawing board of Soto Acebal ... the Solaris 64 RS.

She represents an extremely innovative yacht in the performance cruising world, featuring a raised saloon with 360 degree windows for better panoramic views and a central engine room with two aft cabins isolated from any noise from the machinery and systems. This special boat is rich in customisations, such as the lifting keel (2,45m - 3,75m), carbon mast and V-boom with electrical furling system by Hall Spars. All furlers are electric. The hull and the deck are painted. The boat is equipped with every technology, including carbon rigging, air conditioning in all cabins, bow and stern thrusters and starlink system.





# Standard specification





# Standard specification of the boat

## SOLARIS 64 RS

---

- LOA M 19.40
- LWL M 18.20
- BEAM M 5.40
- DRAFT L.KEEL 2.45-3.75
- DISPLACEMENT Kg 27.600 LIGHT
- BALLAST Kg 8.550
- SAIL AREA M2 222
- GENOA M2 102
- MAINSAIL M2 120
- I M 25.30
- P M 24.10
- E M 8.40
- J M 7.27
- ENGINE Volvo Penta 175 Hp
- WATER TANK L 900
- FUEL TANK L 800
- CE CERTIFICATION RINA A







# Customisations



## CONSTRUCTION

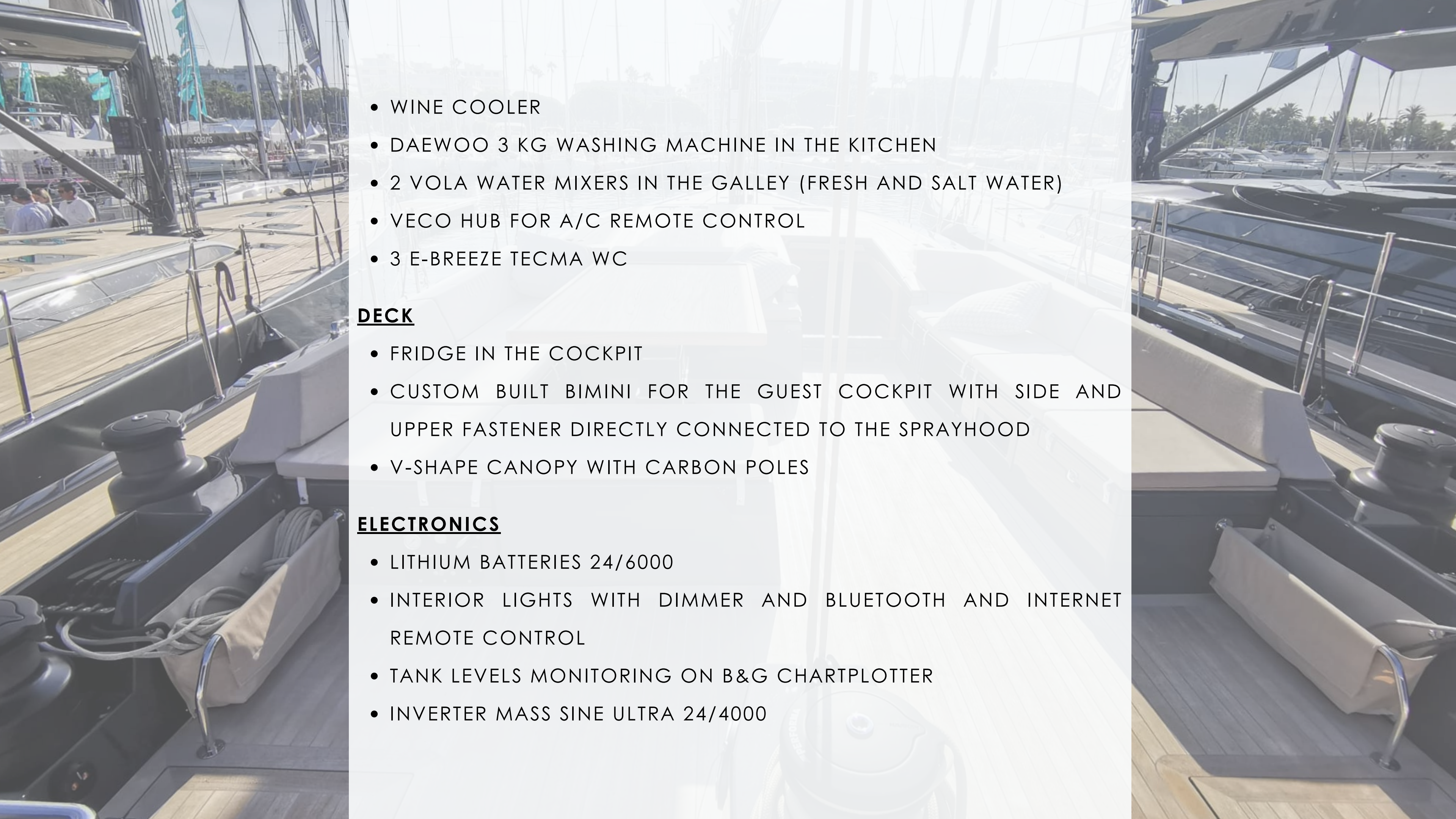
- TELESCOPIC KEEL (2,45M - 3,75M)

## INTERIORS

- CREW CABIN WITH WC AND WASHBASIN, AND SOUNDPROOFING THROUGH ISOPHON LIGHT PANELS
- THIRD FOLDING BED IN THE PORTSIDE AFT CABIN
- DESK WITH LIFT MECHANISM, FRAME TV OR PC SCREEN ON THE BULKHEAD IN THE STARBOARD AFT CABIN
- VOLA TAPS AND FITTINGS AND EXTRA PULL-OUT SPRAYHEADS (WHITE COLOUR)
- EXTRACTOR HOOD IN THE KITCHEN, INDUCTION COOKTOP ON GIMBALS AND COMBINED OVEN
- SINGLE SINK IN CORIAN INTEGRATED IN THE WORKTOP IN THE GALLEY
- CUSTOM RUBBISH BIN WITH COMPARTMENT ACCESSIBLE FROM THE CORIAN WORKTOP
- DOOR HANDLES MODEL LAMA BY OLIVARI
- MOQUETTE IN THE SALOON
- SWIVEL FOLDING TABLE IN THE SALOON
- WOODEN SIDE WALLS IN THE MASTER CABIN
- BLINDS FOR THE CABINS WINDOWS





- 
- WINE COOLER
  - DAEWOO 3 KG WASHING MACHINE IN THE KITCHEN
  - 2 VOLA WATER MIXERS IN THE GALLEY (FRESH AND SALT WATER)
  - VECO HUB FOR A/C REMOTE CONTROL
  - 3 E-BREEZE TECMA WC

### **DECK**

- FRIDGE IN THE COCKPIT
- CUSTOM BUILT BIMINI FOR THE GUEST COCKPIT WITH SIDE AND UPPER FASTENER DIRECTLY CONNECTED TO THE SPRAYHOOD
- V-SHAPE CANOPY WITH CARBON POLES

### **ELECTRONICS**

- LITHIUM BATTERIES 24/6000
- INTERIOR LIGHTS WITH DIMMER AND BLUETOOTH AND INTERNET REMOTE CONTROL
- TANK LEVELS MONITORING ON B&G CHARTPLOTTER
- INVERTER MASS SINE ULTRA 24/4000





# Technical equipment





## **CONSTRUCTION AND SYSTEMS**

- HULL AND DECK PAINTING WITH AWLGRIP METALLIC GREY
- APM MARINE LIFTING KEEL (2,45M - 3,75M)
- CARBON BOWSPRIT INTEGRATED IN THE HULL
- CENTRALISED SEWAGE TANK
- BOW THRUSTER R300 INSTEAD OF THE R200
- STERN THRUSTER R200
- CARBON RUDDER SHAFT AND BALDES
- A/C IN ALL CABINS
- 11 KW ONAN GENERATOR
- VARIFOLD FOLDING PROPELLER VF 120 - 4 BALDES 25X21"
- SCHENKER WATERMAKER 150 LT/HOURS 24V
- CARBON STEERING WHEELS

## **MISCELLANEOUS**

- GENIUSS TENDER 330 OPEN LUXURY INVISIBLE WITH SUZUKI DF20AES OUTBOARD ENGINE - ELECTRIC DRIVEN (+ WIRING, BATTERY AND BATTERY CUT-OFF SWITCH)
- ULTRA ANCHOR 45 KG WITH ANCHOR JOINT
- STAINLESS STEEL ANCHOR CHAIN





# Deck fittings and Rigging



## DECK FITTINGS

- SIDE DECKS, COACHROOF AND BATHING PLATFORM COVERED WITH TEAK
- 2 SOLIMAR PORTHOLES ON THE COACHROOF
- ADJUSTABLE COCKPIT TABLE WITH LIFT MECHANISM TO BE TURNED INTO A LOUNGE AREA
- FRIDGE DRAWER IN THE COCKPIT
- ELECTRIC RETRACTABLE MOORING WINCH
- 3 ELECTRIC WINCHES MODEL HARKEN PERFORMA, SIZE 80 (CENTRAL MAIN SHEET + 2 MANOEUVRES)
- SPRAYHOOD
- CUSTOM BUILT BIMINI FOR THE GUEST COCKPIT WITH SIDE AND UPPER FASTENER DIRECTLY CONNECTED TO THE SPRAYHOOD
- PROTECTION COVERS FOR THE STEERING WHEELS, COCKPIT TABLE AND CONSOLES
- 2 HALYARD BAGS
- 8 STAINLESS STEEL FOLDING CLEATS (OF WHICH 2 AMIDSHIPS AND 2 AFT FOR THE MOORING)
- 2 HARKEN REMOVABLE PADEYES
- SNATCH BLOCK FOR SELF-TACKING JIB SHEET BY UBI MAIOR
- CLEAT IN THE ANCOR LOCKER TO FIT THE ANCHOR CHAIN AND 2 HANGING RAILS IN THE ANCHOR CHAIN
- STAINLESS STEEL GATS IN THE LIFELINES BOTH PORTSIDE AND STARBOARD
- V-SHAPE CANOPY WITH CARBON POLES
- SIDE SWIMMING LADDER IN CARBON
- REMOVABLE TEAK FOOT RESTS
- HYDRAULIC TELESCOPIC GANGWAY IN STAINLESS STEEL 2,20 M



## ALBERATURA

- HALL SPARS CARBON MAST
- HALL SPARS CARBON V-BOOM WITH WITH ELECTROHYDRAULIC FURLIG SYSTEM
- FORESTAY WITH RUNNING BACKSTAYS
- ELECTRIC JIB, CODE 0 AND FORESAIL FURLERS BY RECKMANN
- 2 RUNNING BACKSTAYS IN KEVLAR FOR THE FORESAIL
- CODE 0 HALYARD 2:1
- STAYSAIL 2:1 HALYARD
- RECKMANN REMOTE CONTROL FOR THE BOOM
- GEAR FOR GENNAKER AND CODE 0
- CHAINPLATE AND JIB TACK, WITH UBI MAIOR REMOVABLE PADEYE
- STAYSAIL SHEETS ON REMOVABLE PADEYES
- DOYLE SAILS (FULL BATTEN MAINSAIL PERFORMANCE CRUISE, CARBON BATTENS SET, SELF TACKING JIB PERFORMANCE CRUISE, STAYSAIL PERFORMANCE CRUISE TRT, INNER JIB LUFF CABLE K49, CODE 0 63% MG PERFORMANCE CRUISE RADIAL, LUFF CABLE K49, HEADBOARD PLATE HARKEN 3876, EXTRA NO TORSION FURLING CABLE HEADSTAY, STAYSAIL STRUCTURE LUFF TACK AND HEADPLATE, UBIMAIOR FURLER FR200RW, STAYSAIL LUFF STRATIS TITANIUM UPGRADE)





















# Electronics and entertainment



## ELECTRONICS

- 22 ADDITIONAL 220 V SOCKETS
- 18 USB SOCKETS A+C TYPE
- 3 DATA USB SOCKETS ON THE DESK IN THE STARBOARD AFT CABIN
- LITHIUM BATTERIES 24/6000
- INVERTER MASS SINE ULTRA 24/4000 (INCLUDING OVERLOAD ALARM, CONSUMPTION MONITORING ON B&G CHARTPLOTTER, WASHING MACHINE, DISHWASHER, COOKTOP CONNECTION, FANCOILS UNDER THE INVERTER)
- INTERNAL NETWORK SYSTEM CONNECTED TO THE 5G PEPLINK OR STARLINK
- B&G H5000 NAVIGATION PACK (2 DISPLAYS H5000 GFD, H5000 HYDRA SOFTWARE, AUTOPILOT KEYPAD H5000, H5000 POWER COMPUTER, 24V ROTARY MECHANICAL DRIVE, TRITON-2 DISPLAY FOR THE ANALOGUE WIND DIRECTION, VHF MODEL V60 INCLUDING SECOND UNIT H60 IN COCKPIT)
- B&G MULTIFUNCTION TOUCHSCREEN DISPLAY MODEL ZEUS 3S 12" WITH INTEGRATED GPS ANTENNA ON BOTH CONSOLES AND AT THE CHART TABLE
- B&G MULTIFUNCTION TOUCHSCREEN DISPLAY MODEL ZEUS 3S 7" WITH INTEGRATED GPS ANTENNA IN THE MASTER AND CREW CABINS
- NAVIONICS CHART PLATINUM PLUS MEDITERRANEAN AND BLACK SEA
- GPS ANTENNA ZG100 NK2 B&G (WITH INTEGRATED RATE COMPASS AND 10 HZ SIMNET OUTPUT)
- SIMRAD TRANSPONDER AIS NAIS-500 CLASS B CONNECTED TO THE MULTIFUNCTION DISPLAY ZEUS-3 SERIES INCLUDING SPLITTER MODEL SIMRAD NSPL-500
- 2 B&G NEMESIS 12" DISPLAYS NEMESIS 12" CONNECTED TO THE NMEA2000



- HUB 3 SIMRAD PORTS FOR NEMESIS DISPLAY
- RADAR ANTENNA MODEL B&G HALO 20 PLUS
- 2 SWITCH 5 SIMRAD PORTS FOR HS NETWORK
- TRASDUCER WS720 1.1 M
- PORT REPEATER + LICENCE
- WATERTIGHT VHF LOUDSPEAKER IN THE COCKPIT
- ADDITIONAL AUTOPILOT KEYBOARD, MODEL H5000
- 2 FIXED WATERTIGHT DAY/NIGHT CAMERAS INSTALLED AT THE LOWER SPREADER COMPLETE WITH NVR VIDEO RECORDER
- FORWARD SCAN
- 2 THERMAL CAMERAS FLIR AX8 9 HZ IN THE ENGINE ROOM
- STARLINK MARITIME
- 6 LAN PORTS
- SENTINEL MONITORING ALARM SYSTEM
- ELECTRIC INFLATOR FOR THE TENDER IN THE GARAGE

### **ENTERTAINMENT**

- SONOS SYSTEM (4 SONOS ONE, 1 PLAYBAR BEAM, 1 BOOSTER WIFI)
- SPEAKERS IN THE COCKPIT JL AUDIO + ACCESSORIES SONOS SYSTEM
- FRAME TV 50" SAMSUNG IN THE SALOON
- FRAME TV 43" SAMSUNG IN THE STARBOARD AFT CABIN





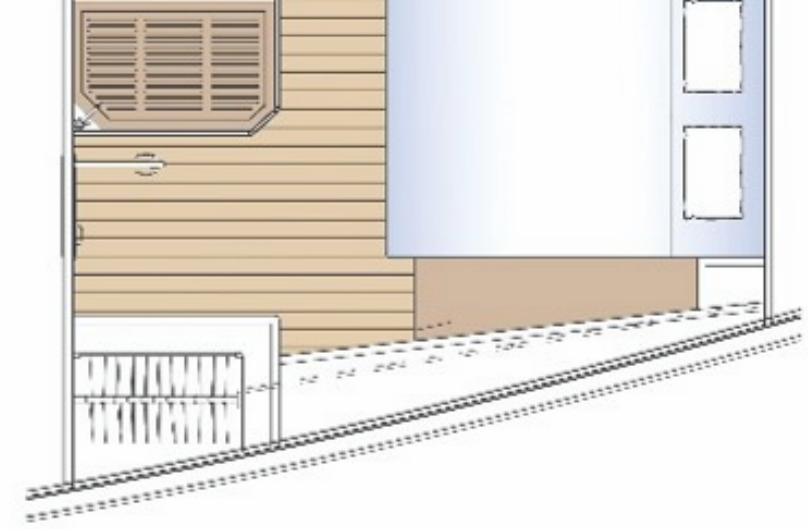
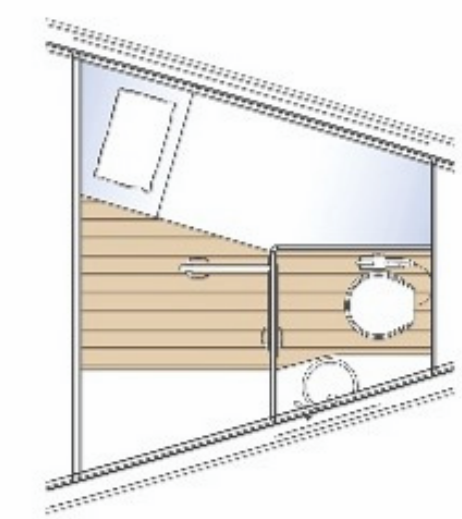
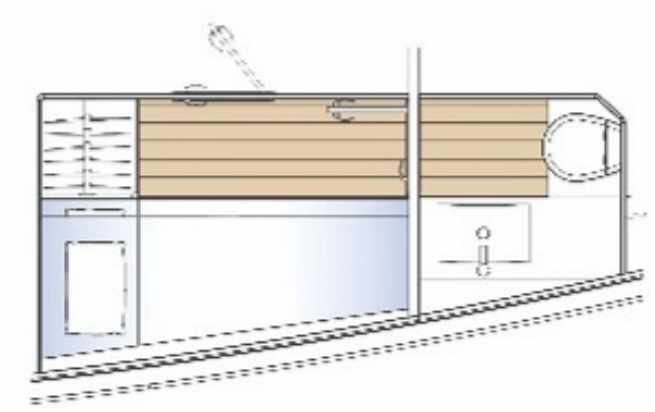
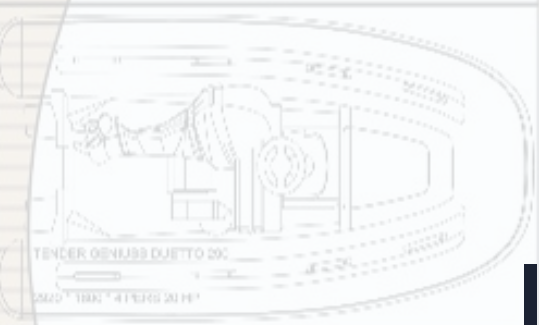








# Interiors







# Interiors

The innovation begins with the interior layout, which provides a large ensuite crew cabin in the bow and a spacious owner's cabin forward with an island bed and generous storage. The galley is located close to the mast and extends across the full beam of the boat. The wide saloon features the companionway off-set to starboard, which provides one big passage way to the guest cabins, all en-suites have separate full height shower compartments. In terms of size and storage volumes the two guest cabins have nothing to envy to the owner's cabin forward.





- BURMA TEAK INTERIORS
- LEATHER ON HORIZONTAL AND VERTICAL TOPS IN THE CABINS
- THIRD FOLDING BED IN THE PORTSIDE AFT CABIN
- SINGLE TO DOUBLE BED CONVERSION KIT IN THE AFT CABIN PORTSIDE
- DESK AND LIFT MECHANISM FOR TV OR PC SCREEN ON THE BULKHEAD TO TURN THE STARBOARD AFT CABIN INTO AN OFFICE
- CREW CABIN SOUNDPROOFING WITH ISOPHON LIGHT PANELS
- FORWARD FACING CHART TABLE
- CUSTOM FOLDING TABLE WITH LIFT MECHANISM IN THE SALOON
- CUSTOM INTERIORS UPHOLSTERY
- VOLA TAPS AND FITTINGS
- 3 E-BREEZE TECMA WC
- DISHWASHER
- 2 VOLA WATER MIXERS IN THE GALLEY
- DAEWOO 3 KG WASHING MACHINE
- WINE COOLER
- VECO HUB FOR A/C REMOTE CONTROL













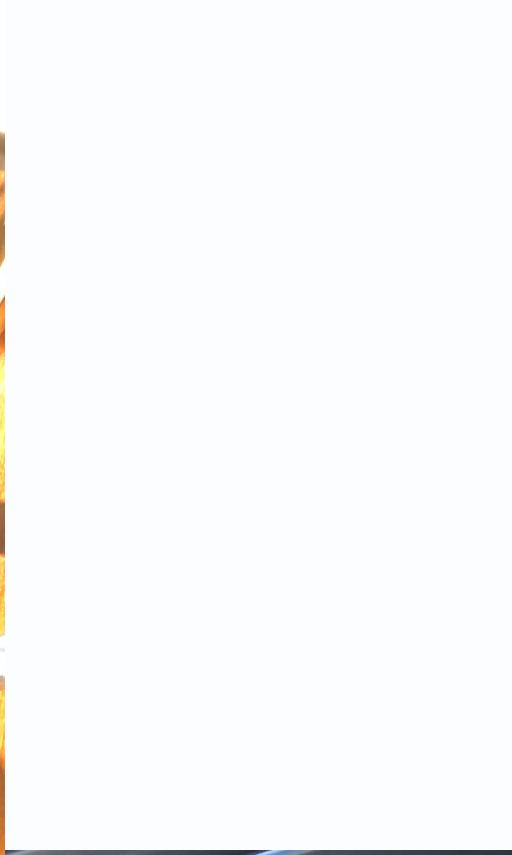












Cabina marinaio



# CONTACT US

---

VINCENZO DE MARIA

+39 347 140 7236

[v.demaria@solarisyachts.com](mailto:v.demaria@solarisyachts.com)



BUILT FOR SAILORS SINCE 1974

40 40st 44 50 <sup>NEW</sup>55 60 | 64rs <sup>NEW</sup>74rs 80rs 111





Find Us Online!



INSTAGRAM



FACEBOOK

Official web page

<https://www.solarisyachts.com/en/>